



**Board of Trustees  
Progress Report  
Core Theme -- Achievement  
Transfer & Workforce**

February 10, 2015

## Core Theme - Achievement

### Objective 1:

Students will successfully progress and meet their educational goals

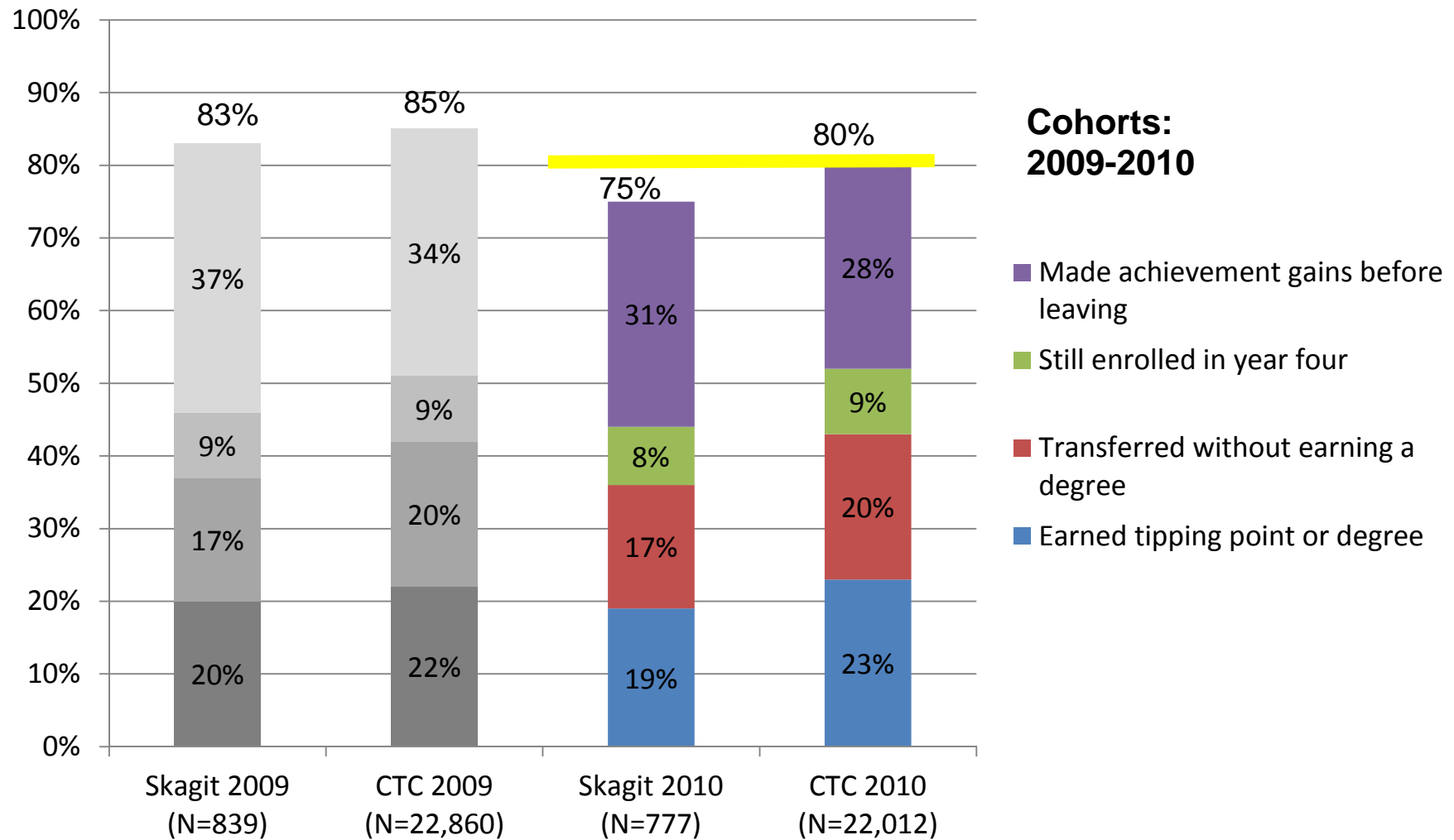
### Indicator:

Student Achievement Cohort success measures for transfer and workforce cohort by race/ethnicity

### Threshold:

SVC transfer and workforce measures will meet or exceed the CTC system measures

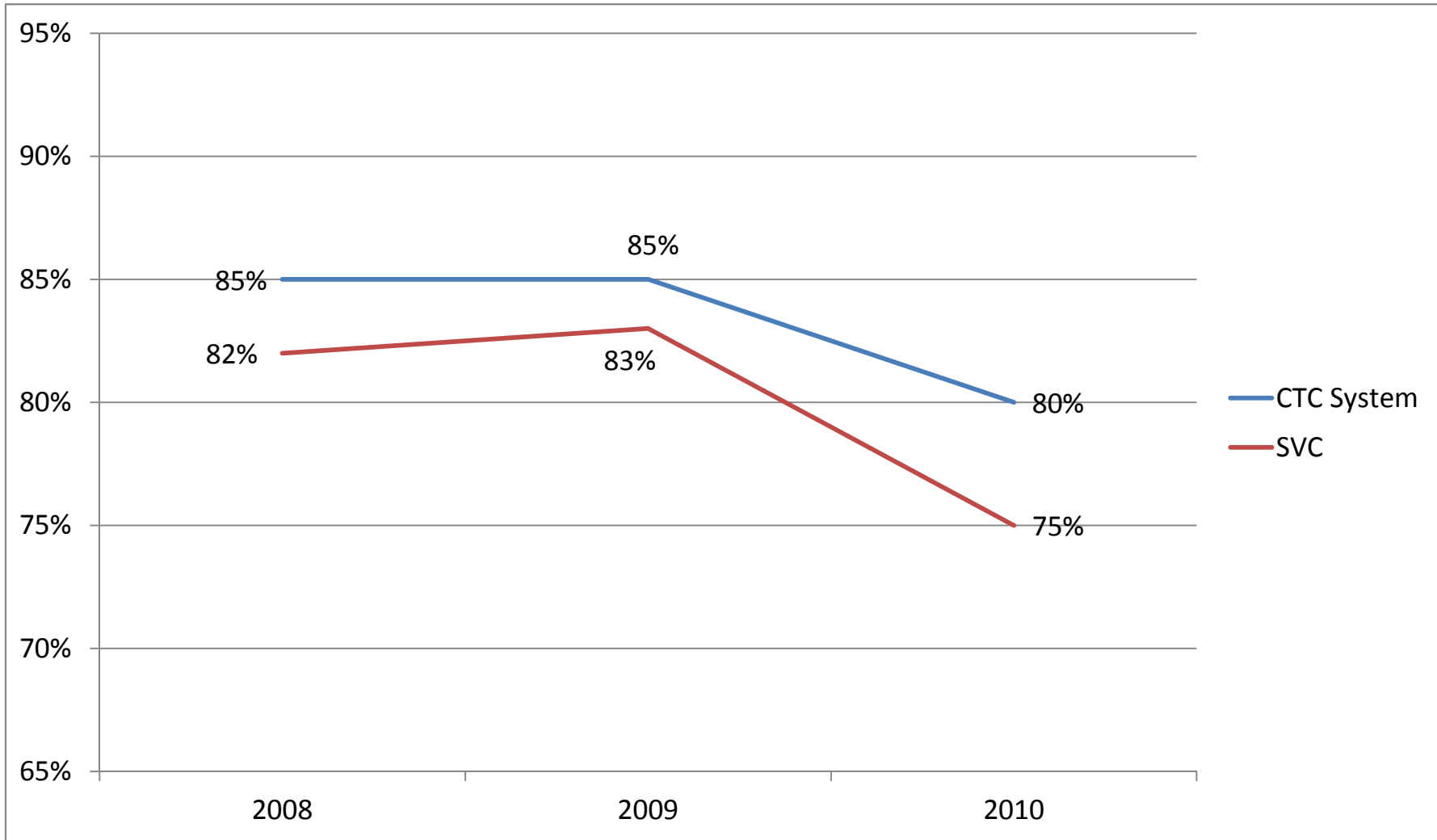
## SVC Transfer Success Rates Lower than CTC System



SVC transfer students were 5 percentage points lower in success measures than transfer students across the CTC system.

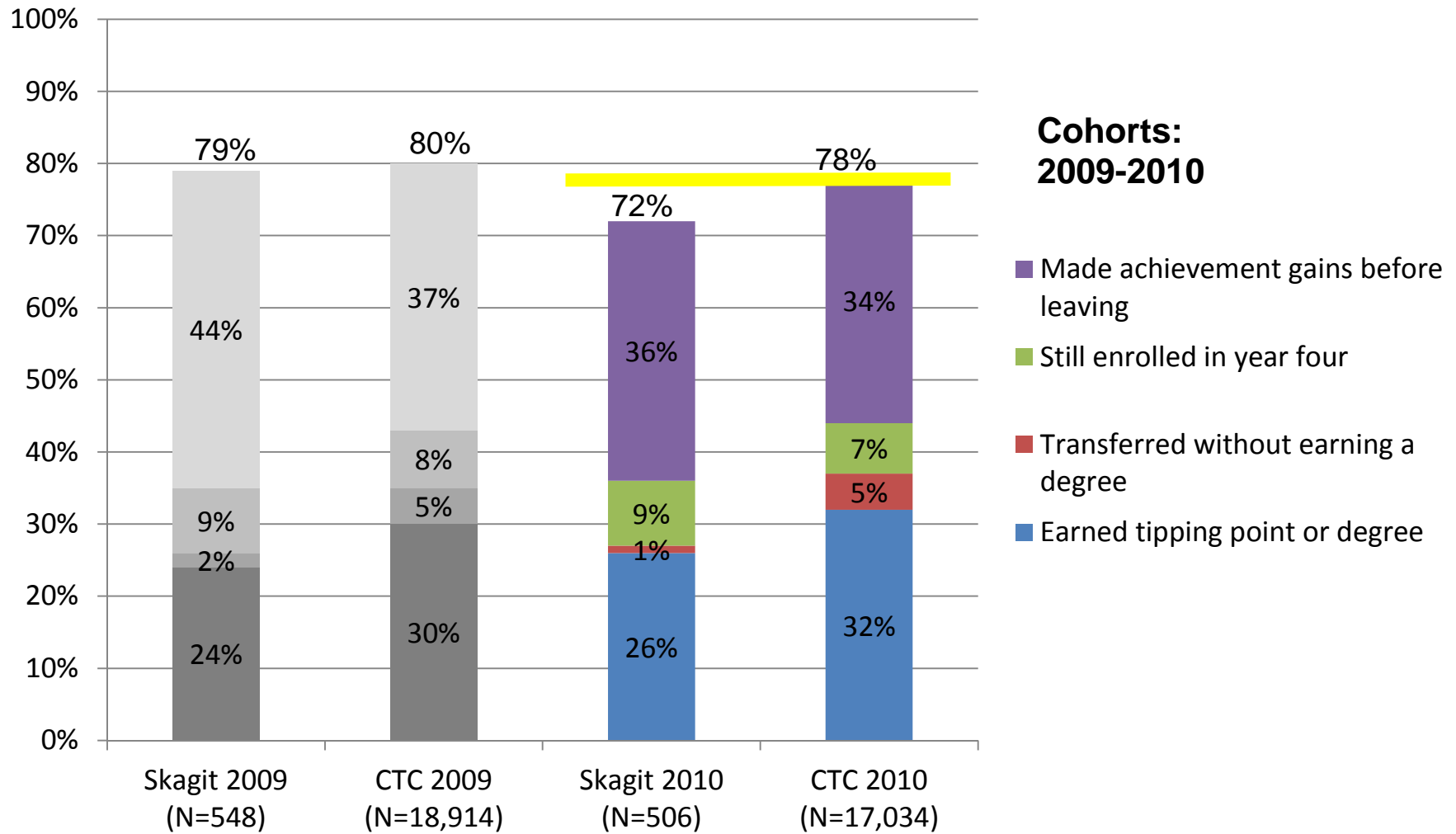


## 3-Year Look at SVC Transfer Student Success



SVC transfer students increased in success measures in the second year, and then experienced a dip similar to, but greater than the CTC system.

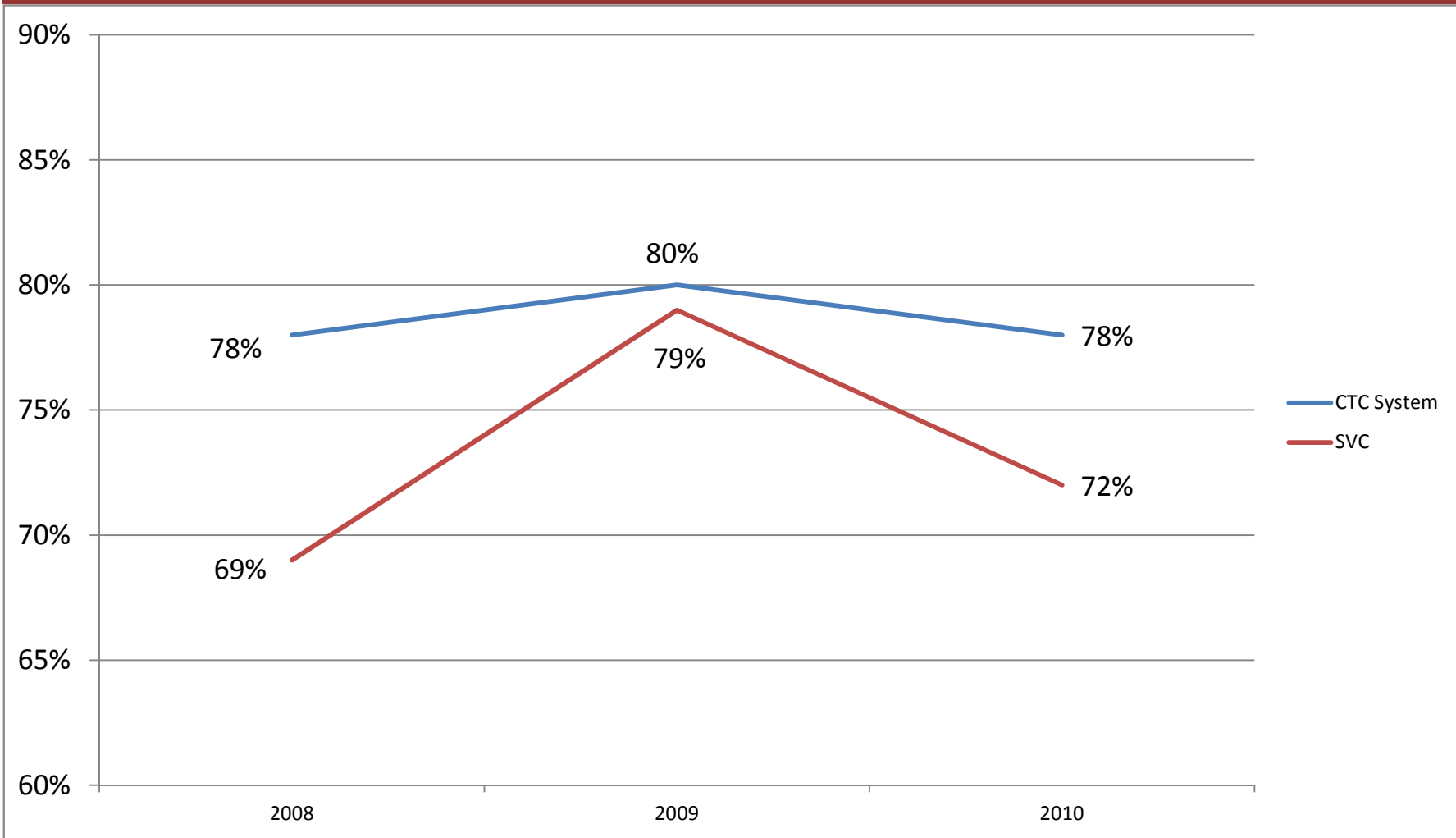
# SVC Workforce Success Rates Lower than CTC System



SVC workforce students were 6 percentage points lower in success measures than workforce students across the CTC system.

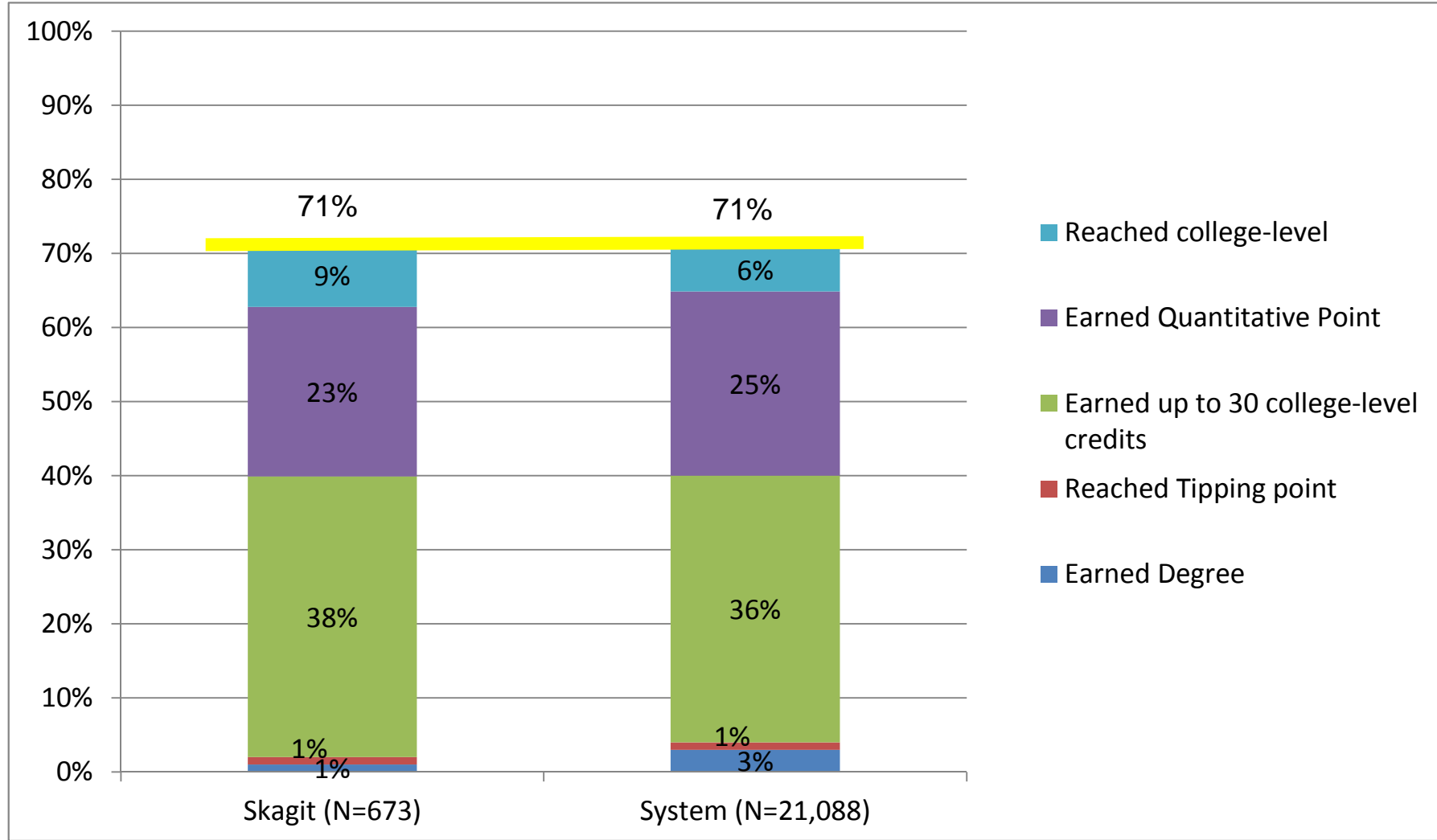


## 3-Year Look at SVC Workforce Student Success



SVC workforce students significantly increased in success measures in the second year, and then experienced a dip similar to, but greater than the CTC system.

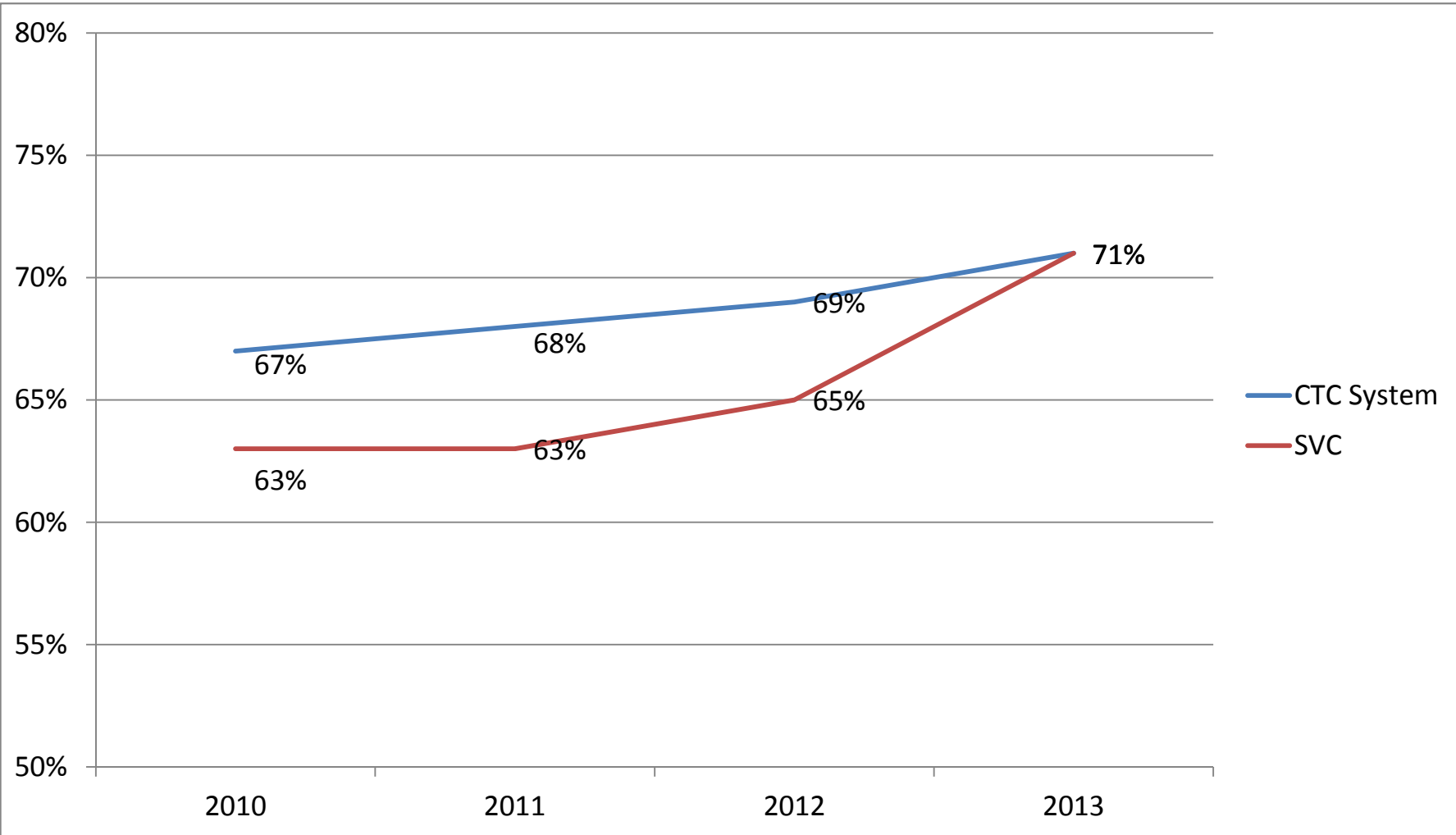
## Transfer Success for All Students Fall to Spring 2013



SVC's Fall to Spring transfer success measures are equal to the CTC system for students starting in 2013 .



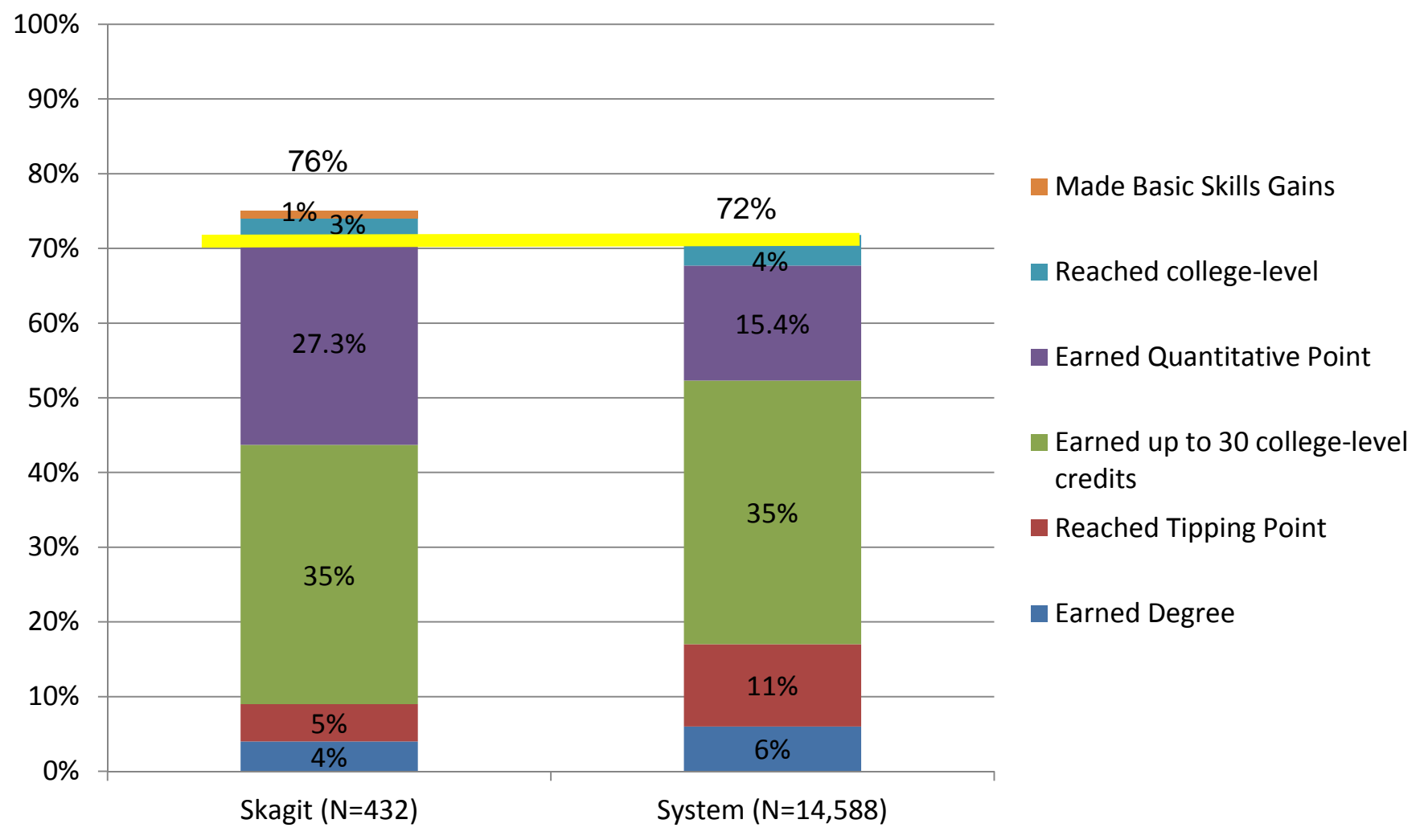
## 4-Year Look at Transfer Fall to Spring Student Success



SVC first-year transfer students increased in success measures each Fall-to-Spring, improving most significantly from 2012 to 2013. SVC now matches the CTC system in success measures.



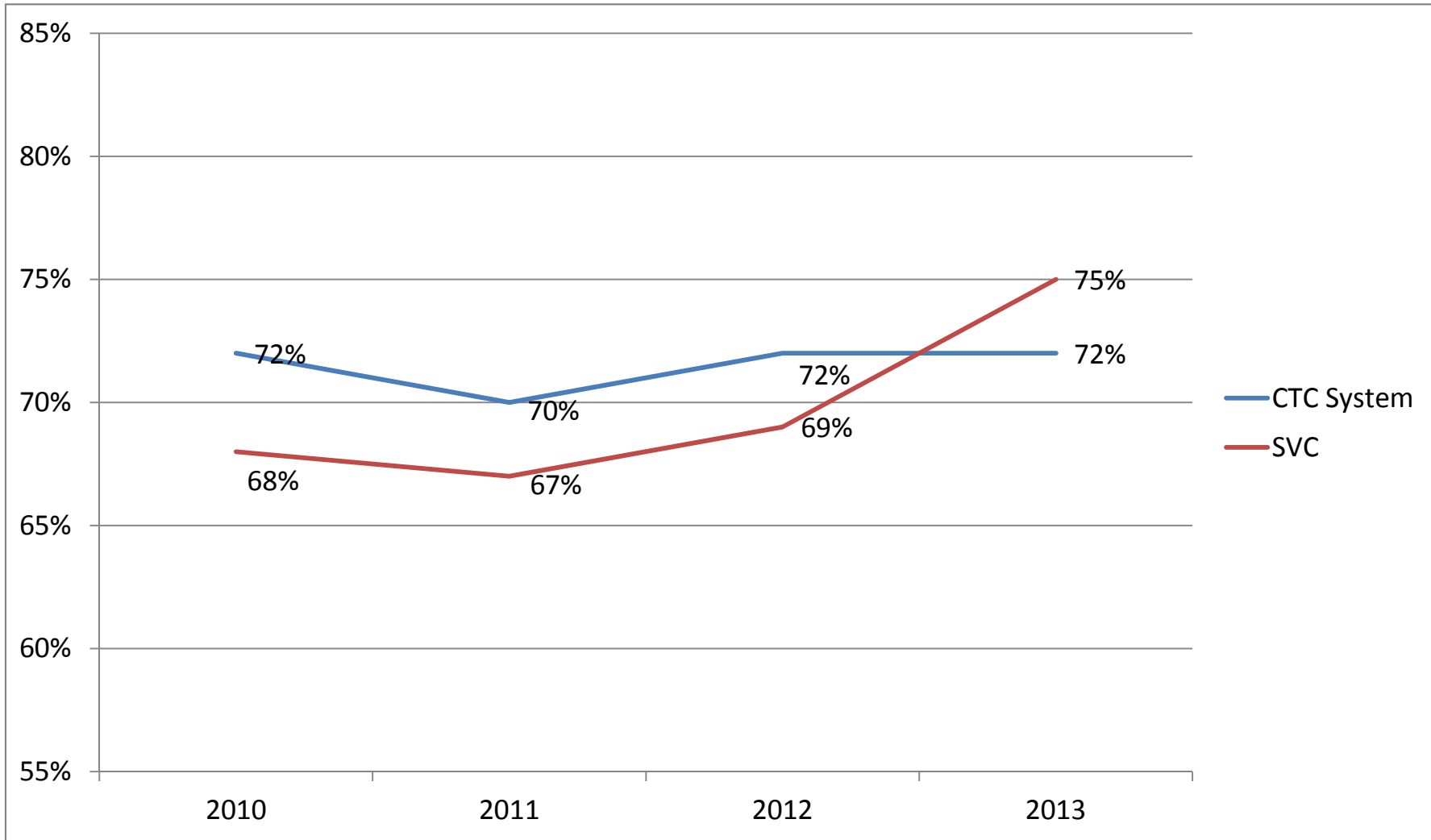
# Workforce Success for All Students Fall to Spring 2013



SVC's Fall to Spring workforce success measures are 4 percentage points higher than the CTC system for students starting in 2013 .

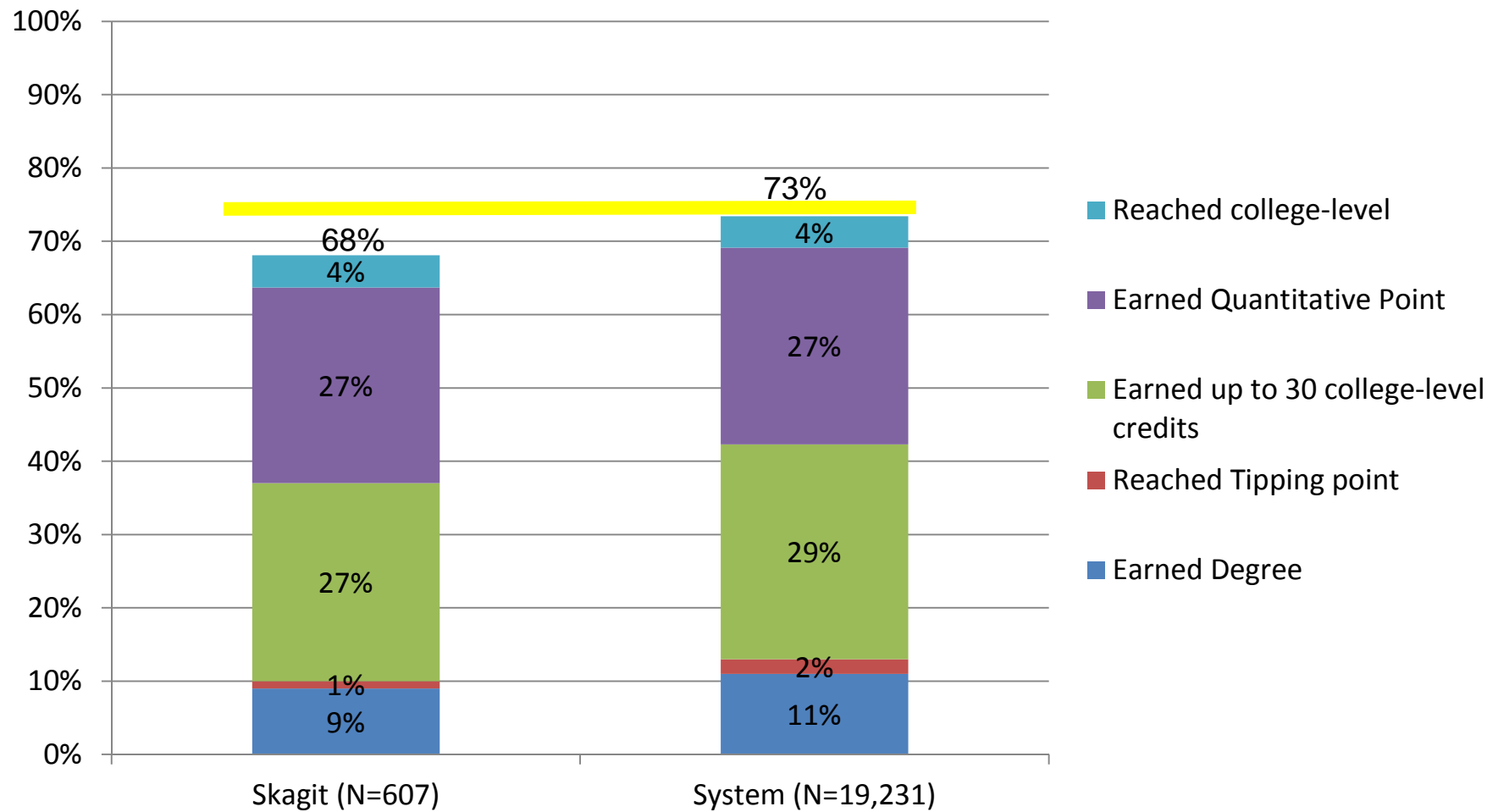


## 4-Year Look at Workforce Fall to Spring Student Success



SVC first-year workforce students dramatically increased in success measures each Fall-to-Spring, exceeding the CTC system in 2013.

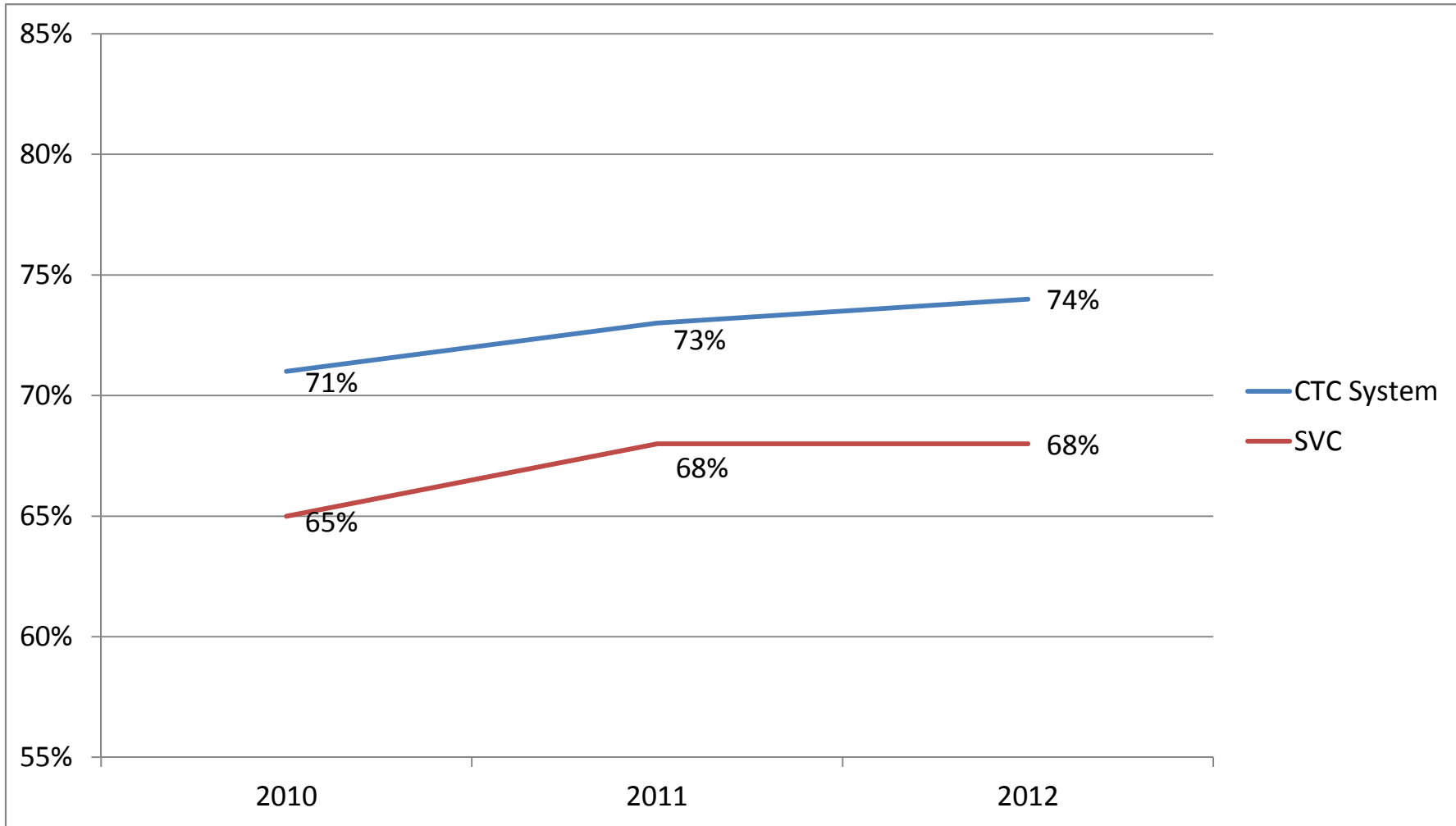
# Transfer Success for All Students Fall to 2nd Spring 2012



SVC transfer two-year Fall to the second Spring success measures are 5 percentage points lower than the CTC system for students starting in 2012.

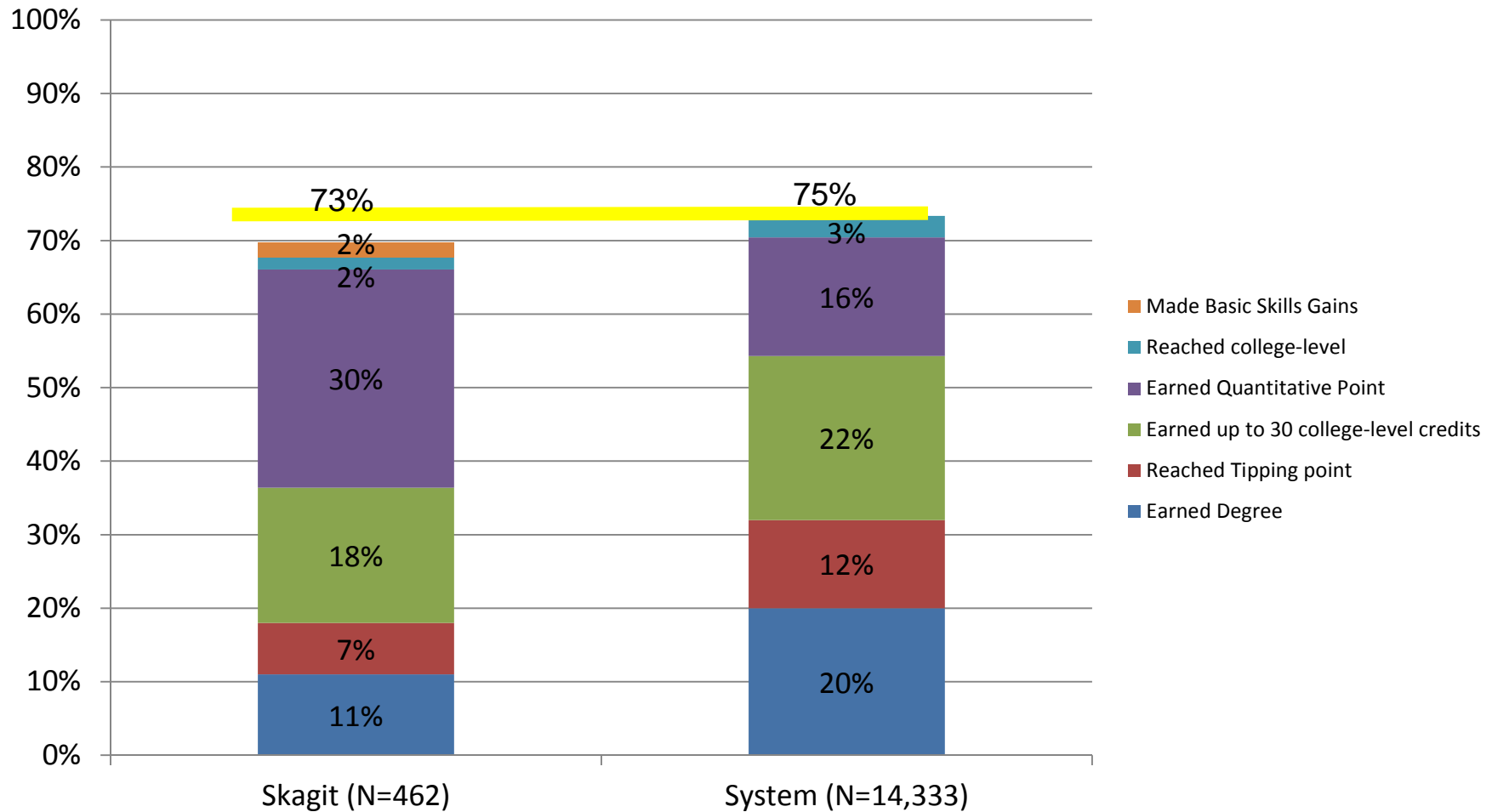


## 3-Year Look at Transfer Fall to 2nd Spring Student Success



SVC transfer students made some progress in two-year achievement gains early on, but stayed steady two years in a row. SVC's transfer student success measures were six percentage points lower than the CTC system.

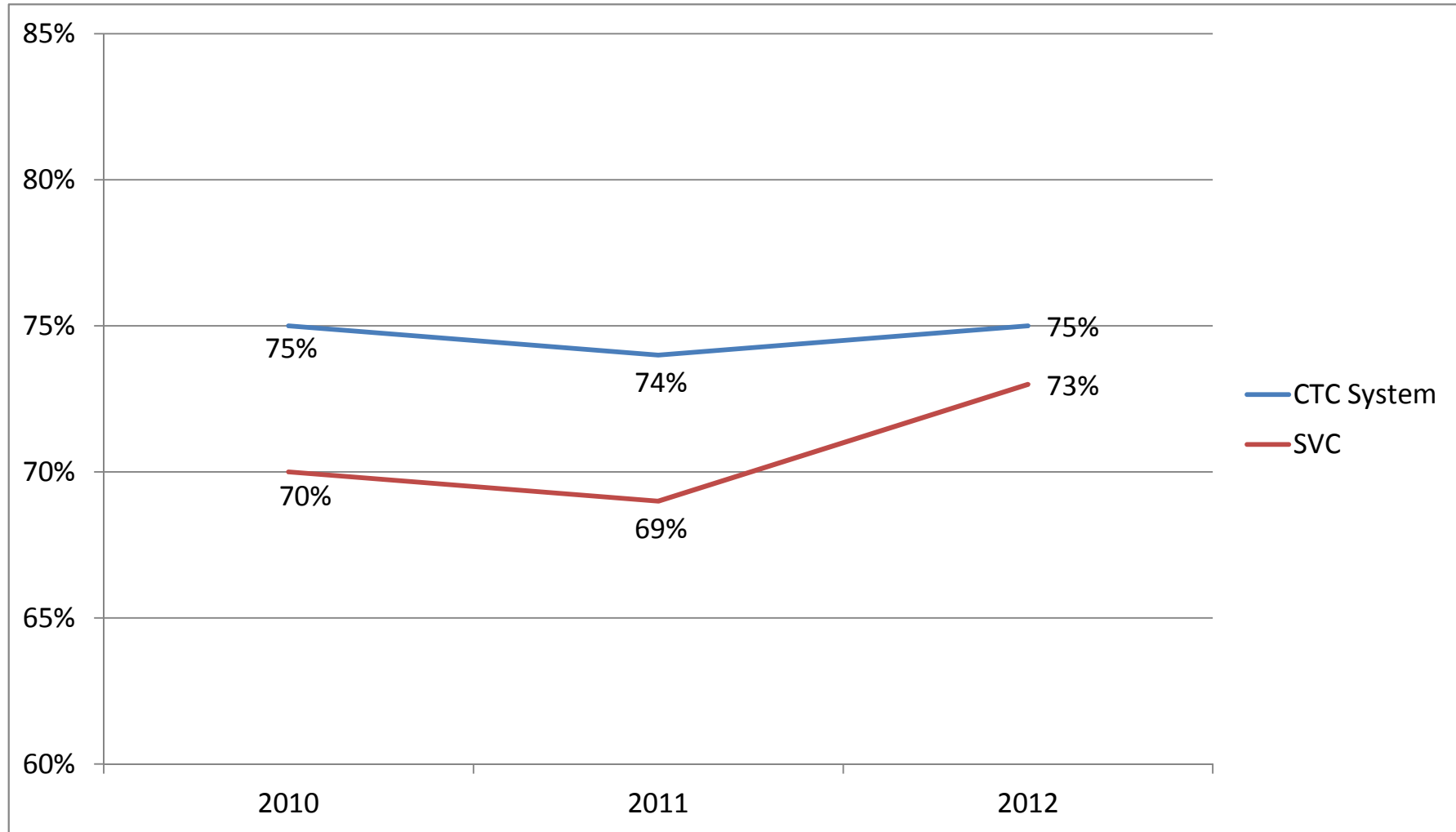
## Workforce Success for All Students Fall to 2nd Spring 2012



SVC workforce two-year Fall to the second Spring spring success measures are 2 percentage points lower than the CTC system for students starting in 2012.



## 3-Year Look at Wfkc. Fall to 2nd Spring Student Success



SVC workforce students dipped in achievement gains and are now on the rebound for levels gained over two years' time. SVC's workforce student success measures were two percentage points lower than the CTC system.

## Core Theme - Achievement Workforce

### **Objective 2:**

Students will successfully transition to the workforce

### **Indicators:**

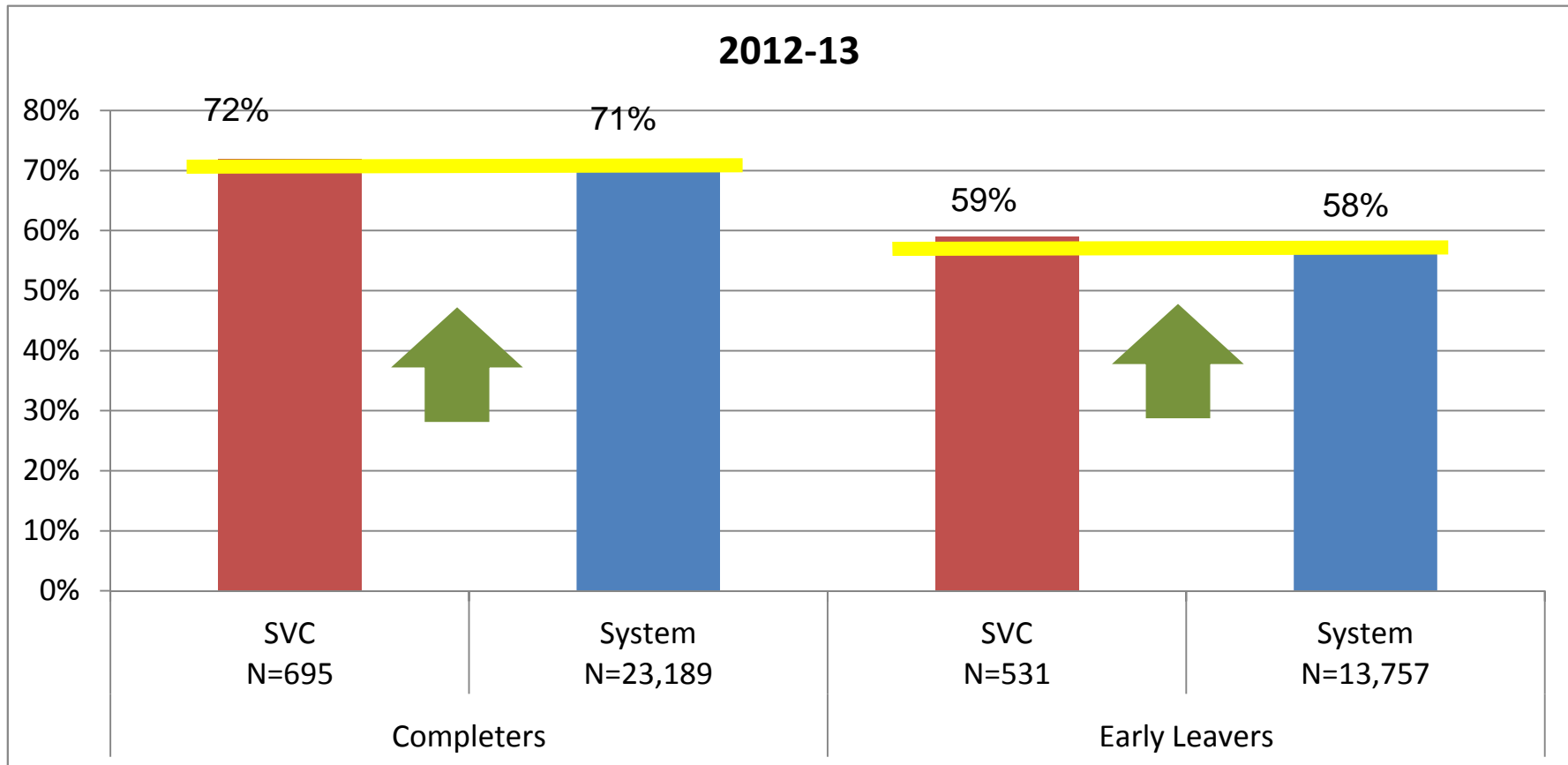
Transition rate of early leavers

Transition rate of completers

### **Threshold:**

Employment rates will meet or exceed the CTC system rates

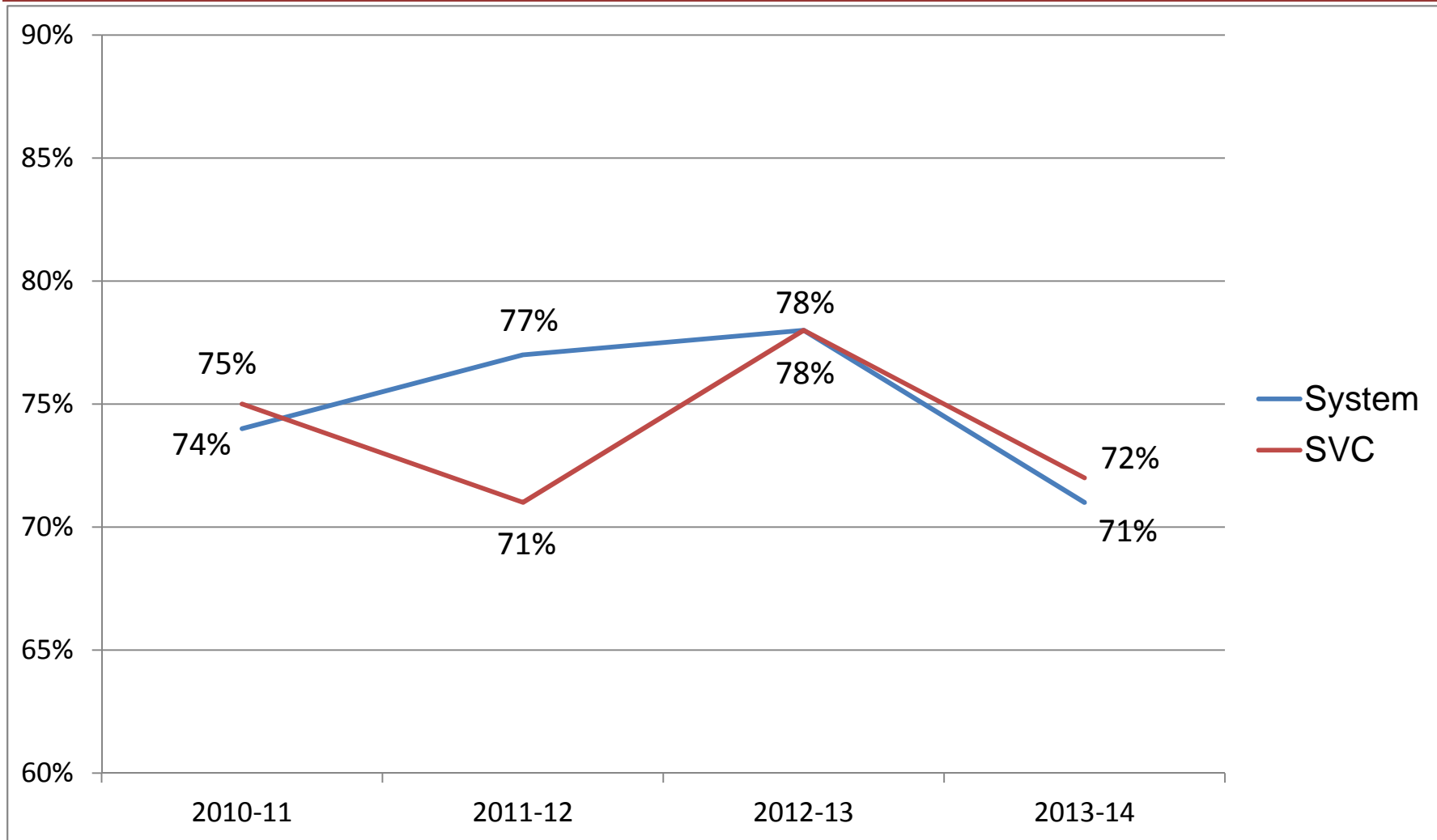
## Workforce Completer Employment Rates Even with CTC System Workforce Early Leavers Employment Rates Higher than CTC System



SVC completer and early leaver students had a 1 percentage point higher employment rate than their peers CTC system. (\*Students completed training in 2012-13 and were employed in 2013-14 within 9 months after training.)

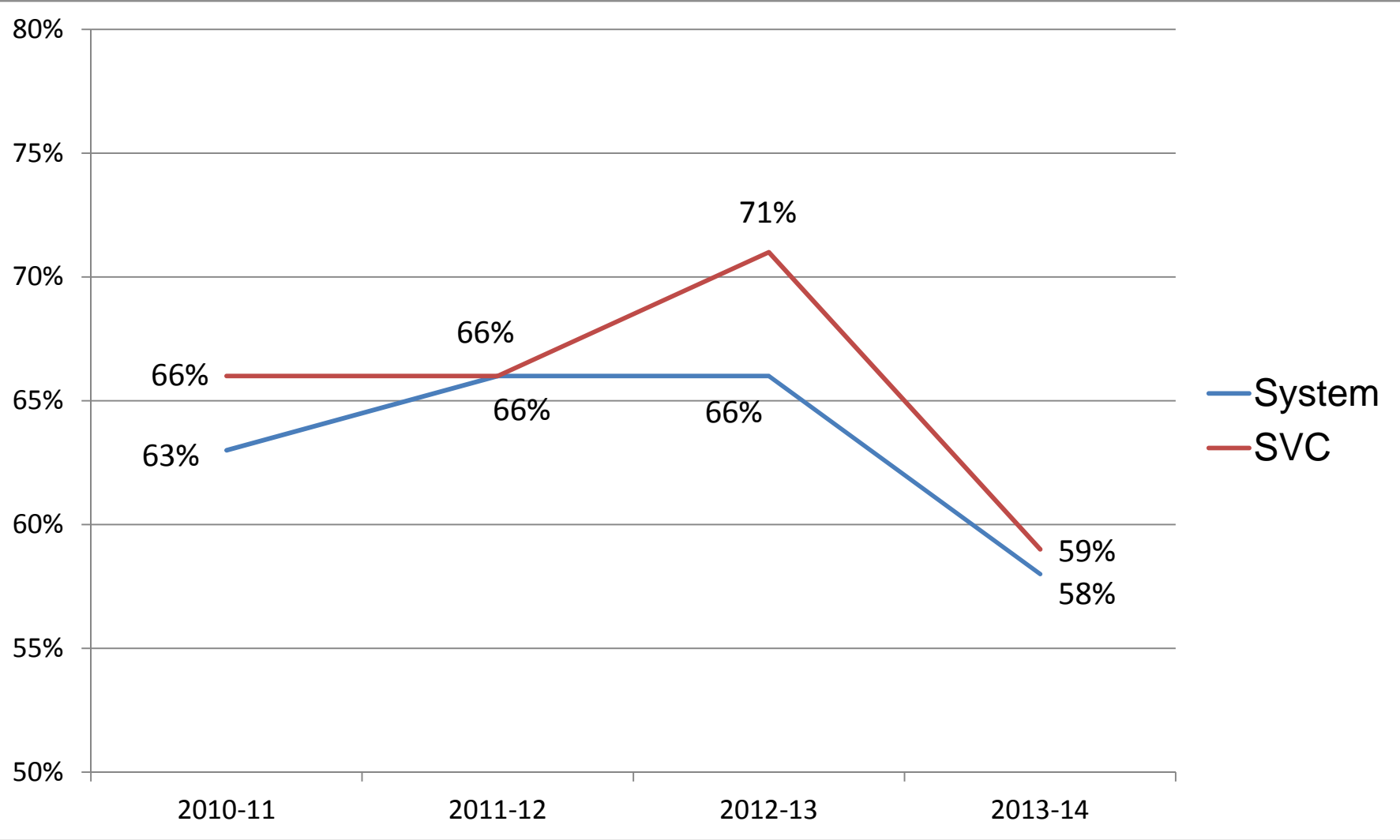


## SVC Completers Exceed the CTC System Employment Rate



SVC completer students have been on par or had a slightly higher employment rate over the past few years than completers across the CTC system.

# SVC Early Leavers Exceed the CTC System Employment Rate



SVC early leavers students have had a higher employment rate over the past few years than early leavers across the CTC system.

## Core Theme Achievement

### **Objective 2:**

Students will demonstrate significant learning related to general education requirements

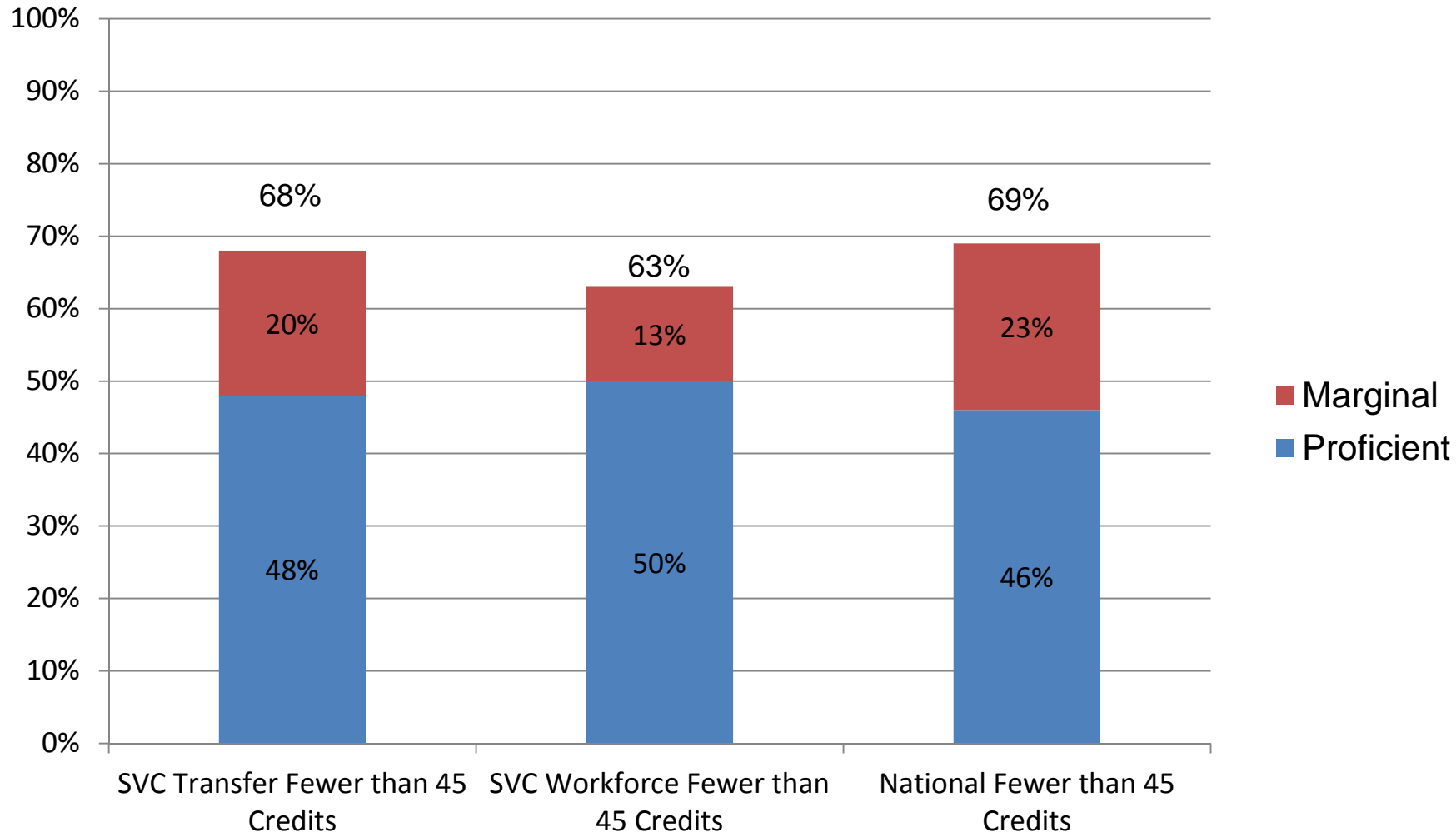
### **Indicator:**

ETS Standardized Test Scores

### **Threshold:**

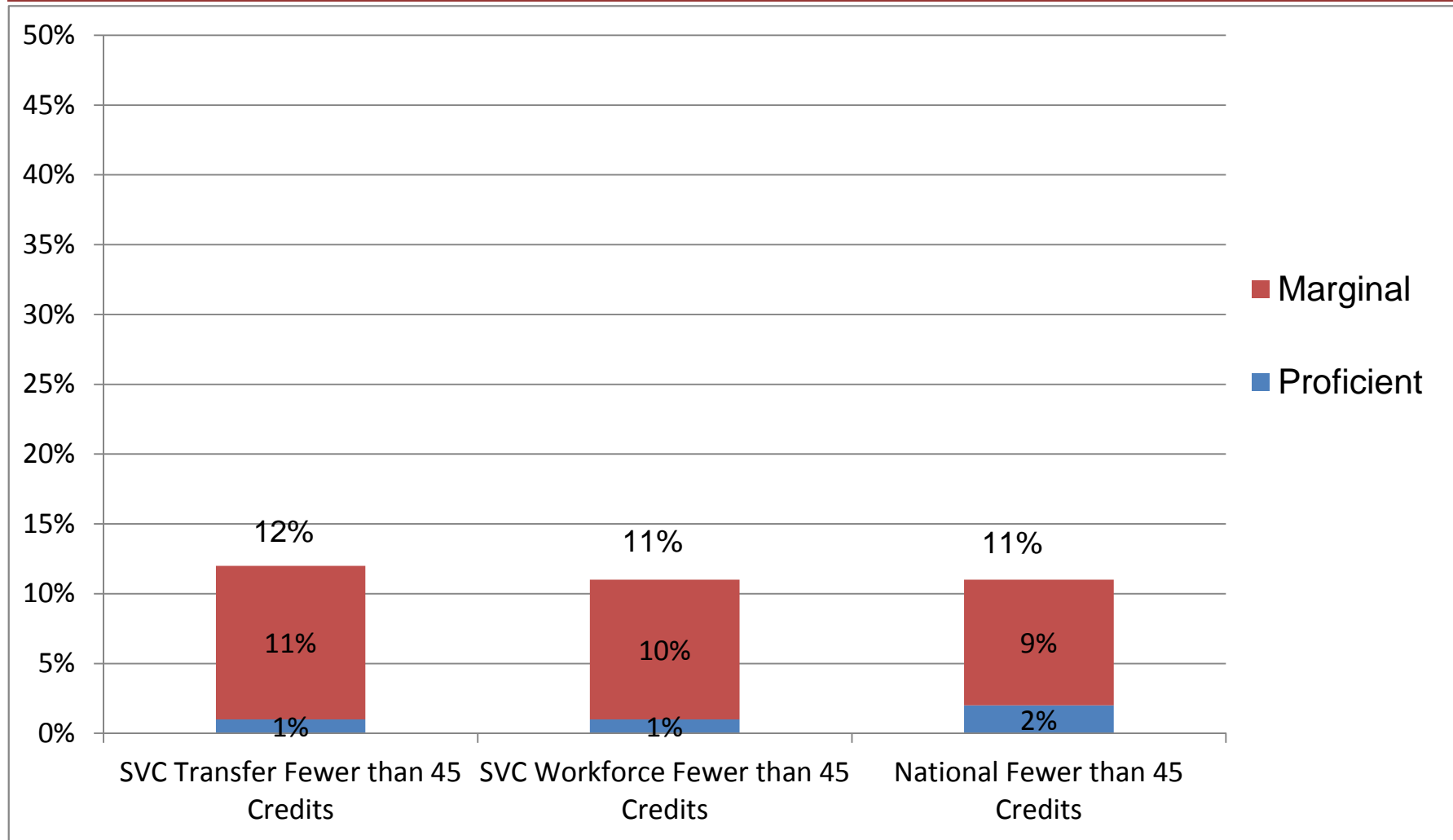
General education learning gains will be equal to or above similar-sized community colleges' ETS scores

# Communication: Reading Comprehension



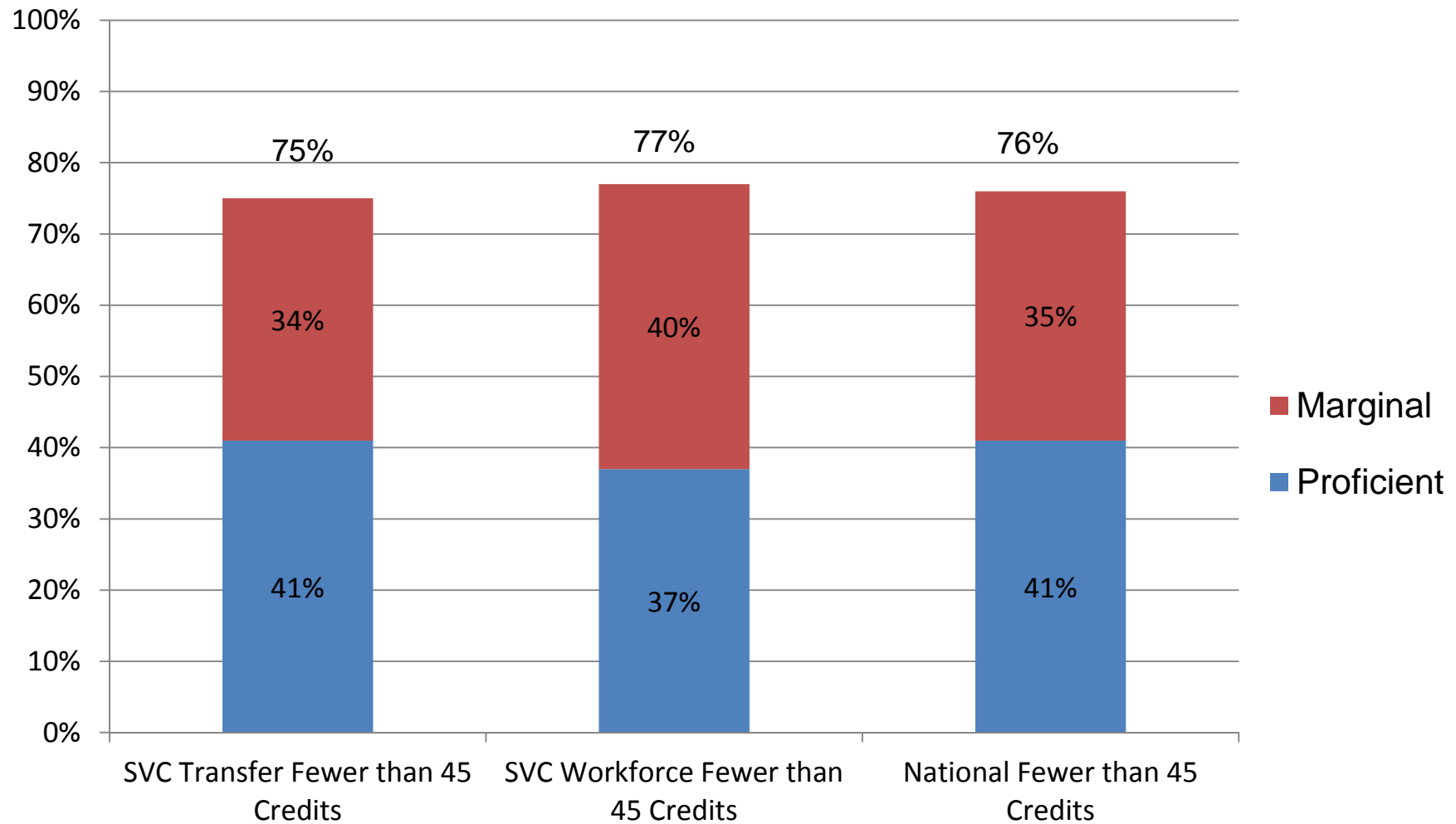
SVC transfer and workforce students with fewer than 45 credits are less proficient in Reading than their peers across the country.

# Critical Thinking



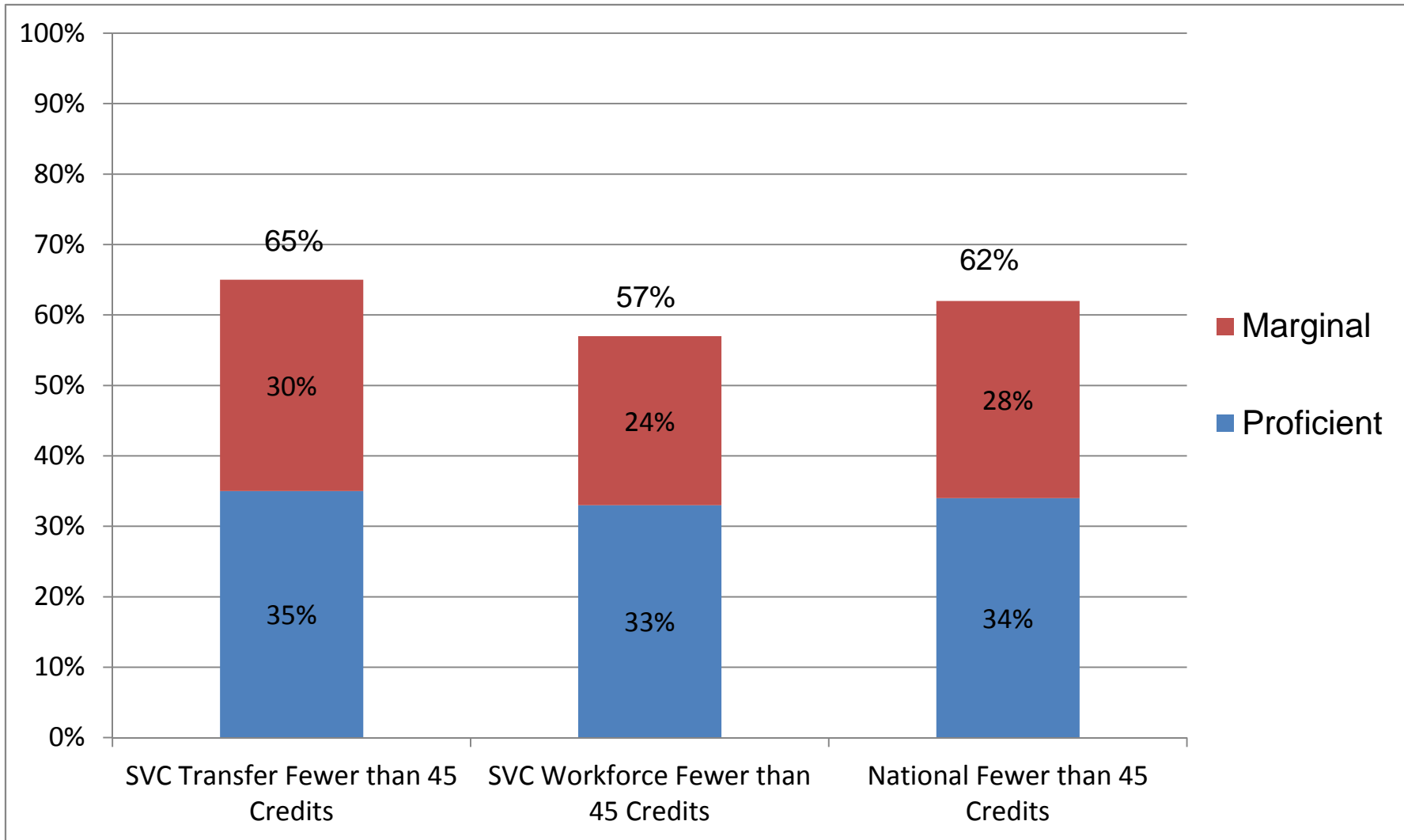
SVC transfer and workforce students with fewer than 45 credits are equal to or more proficient in Critical Thinking than their peers across the country.

## Communication: Writing



SVC workforce students with fewer than 45 credits are more proficient in Writing than their peers across the country. Transfer students lag just behind.

## Mathematical Reasoning - Math



SVC transfer students with fewer than 45 credits are more proficient in Math than their peers across the country. Workforce students lag behind.

## **In Summary**

**SVC students starting in 2013 experienced significant first-year achievement gains compared to prior cohorts of students. The College expects this success to carry over into the students' second-year success measures.**

**SVC Transfer and Workforce students meet or exceed the CTC system in achievement levels earned by first-year students who started in 2013.**

**SVC Transfer and Workforce students are lower than the CTC system in achievement levels earned by second-year students who started in 2012.**

**SVC workforce students are earning jobs at a higher rate than their peers across the CTC system.**