

**Skagit Valley
College
Board of Trustees
Board Progress Report
Core Theme -- Achievement
Workforce**

February 11, 2014

Core Theme - Achievement

Objective 1:

Students will successfully progress and meet their educational goals

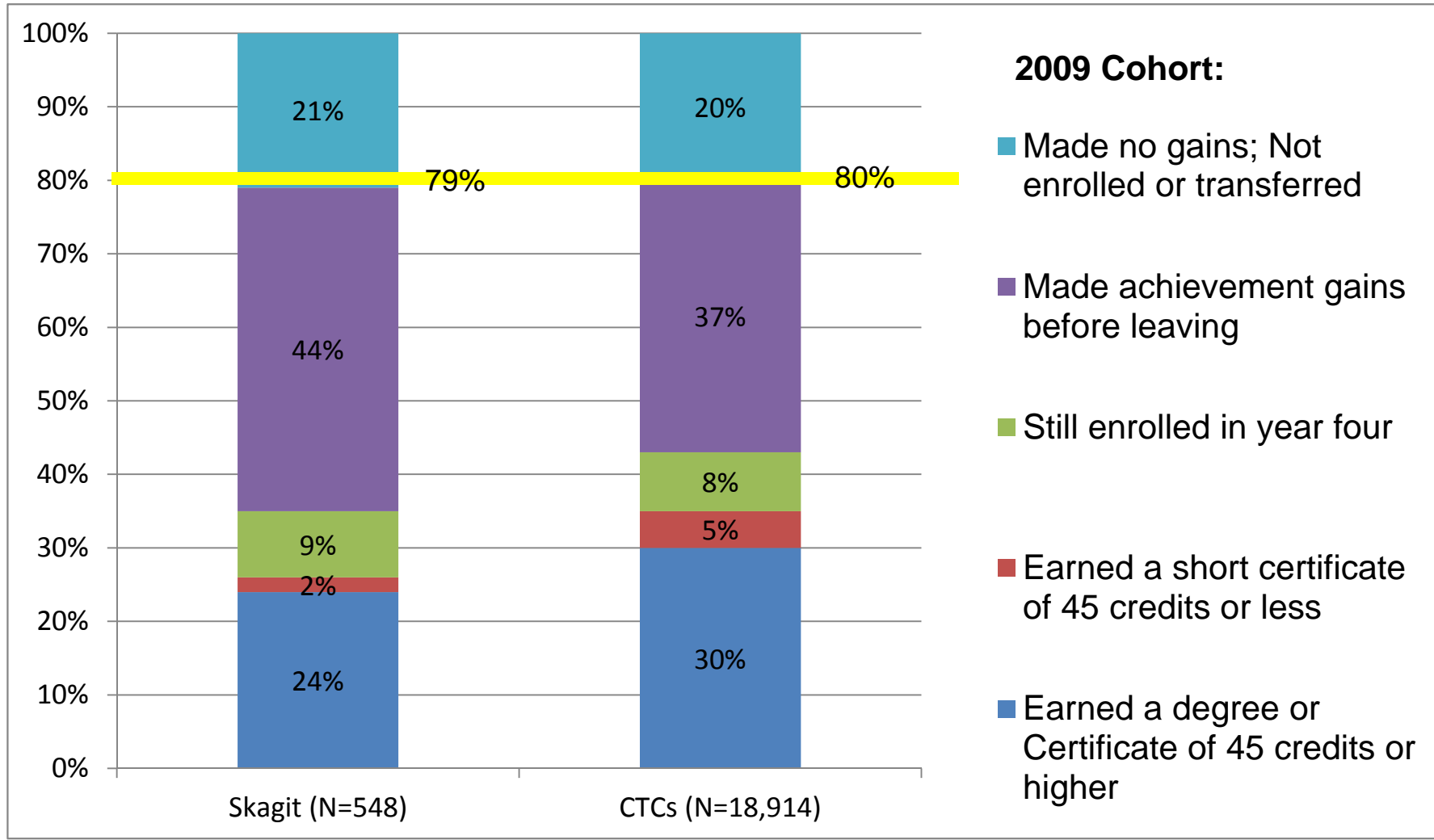
Indicator:

GISS success measures for workforce cohort by race/ethnicity

Threshold:

SVC workforce measures will meet or exceed the CTC system measures

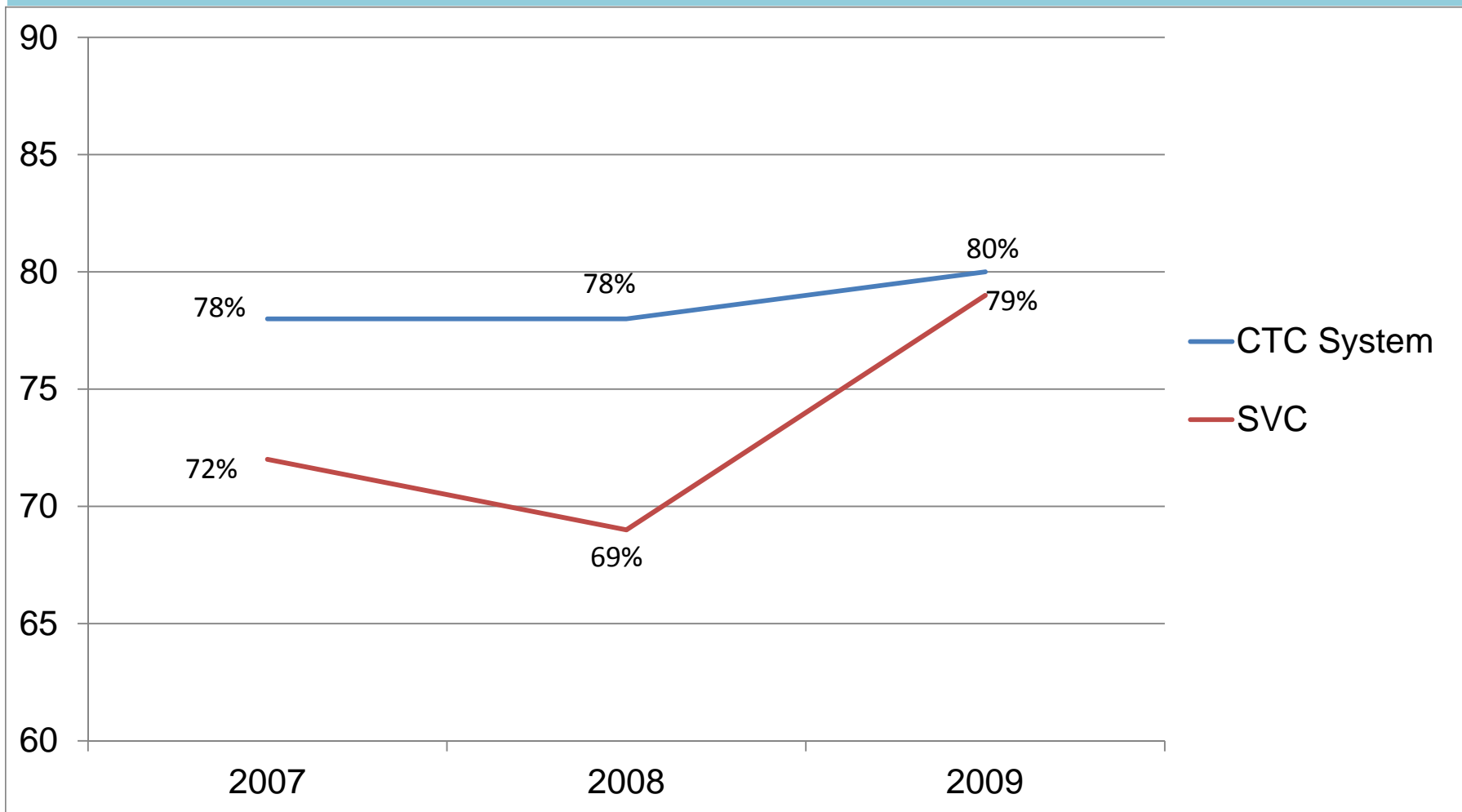
SVC Workforce Success Rates Lower than CTC System



SVC was 1 percentage point lower than the CTC system in workforce student success.

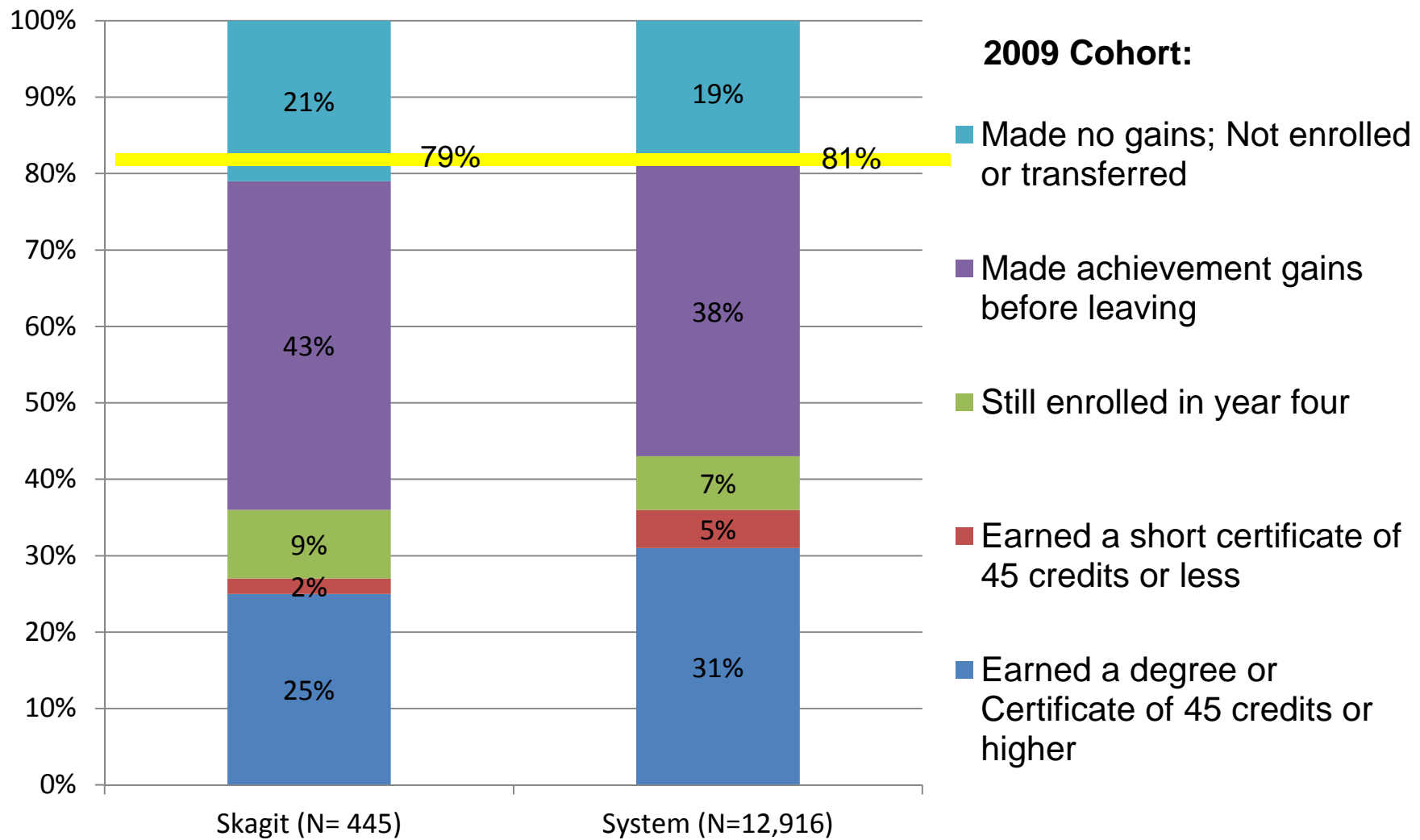


3-Year Look at SVC Workforce Student Success



Over the past three years, SVC increased the success of its workforce cohort of students by 5 percentage points. The CTC system increased the success of the workforce cohort by 2 percentage points.

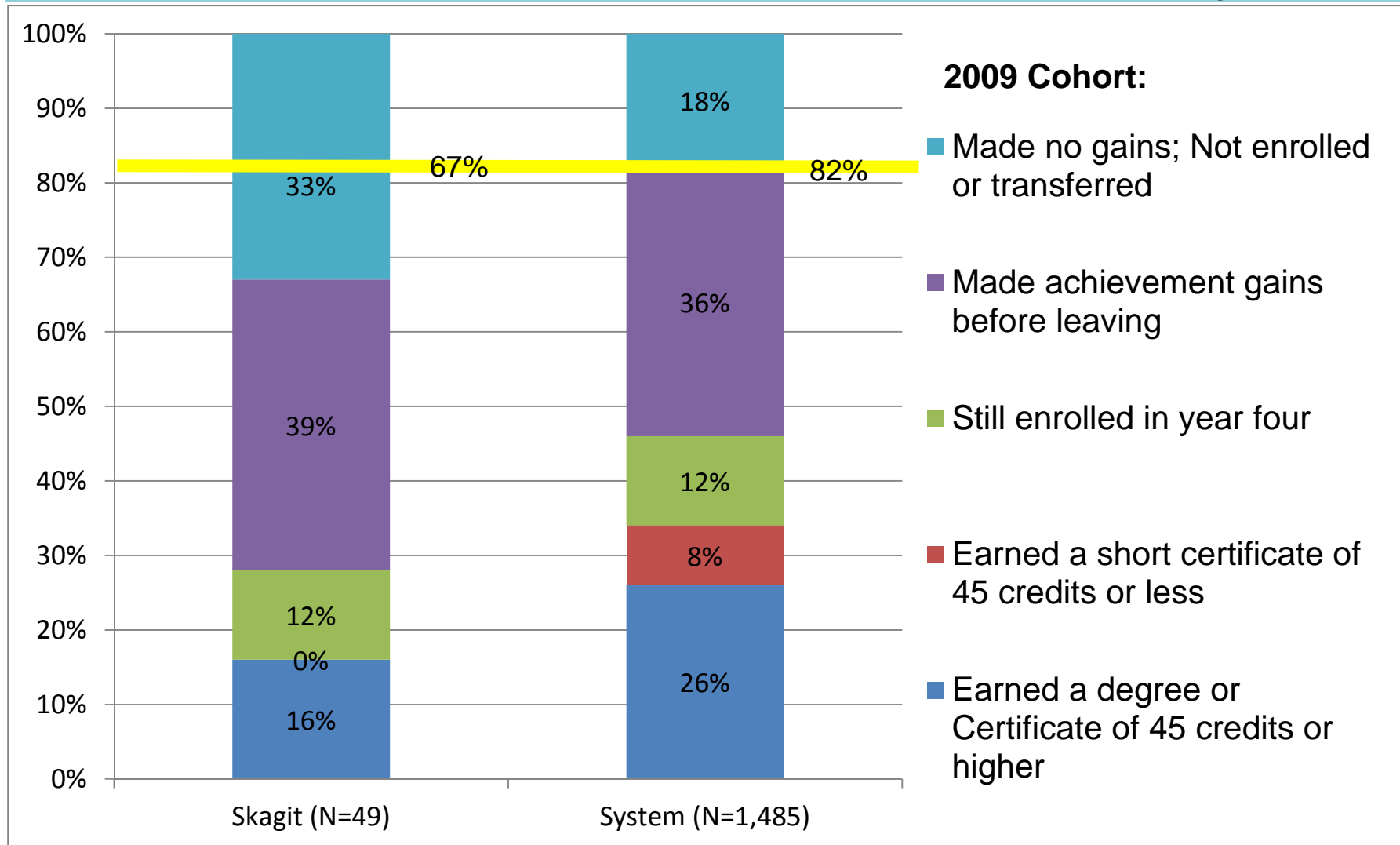
SVC White Student Success Rates Lower than CTC System



SVC was 2 percentage points lower than the CTC system in White workforce student success.



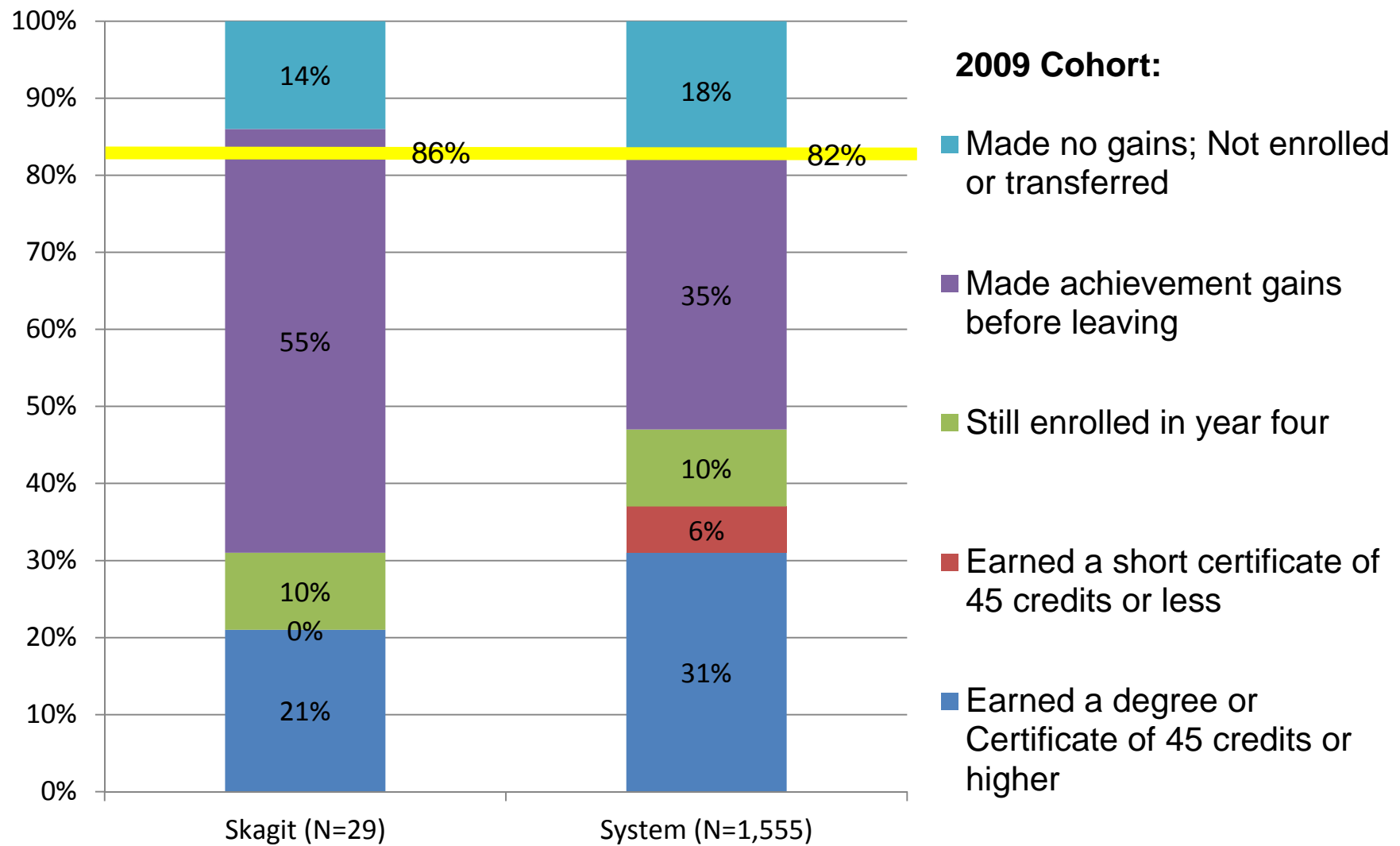
SVC Latino Student Success Rates Lower than CTC System



SVC was 15 percentage points lower than the CTC system in Latino workforce student success.



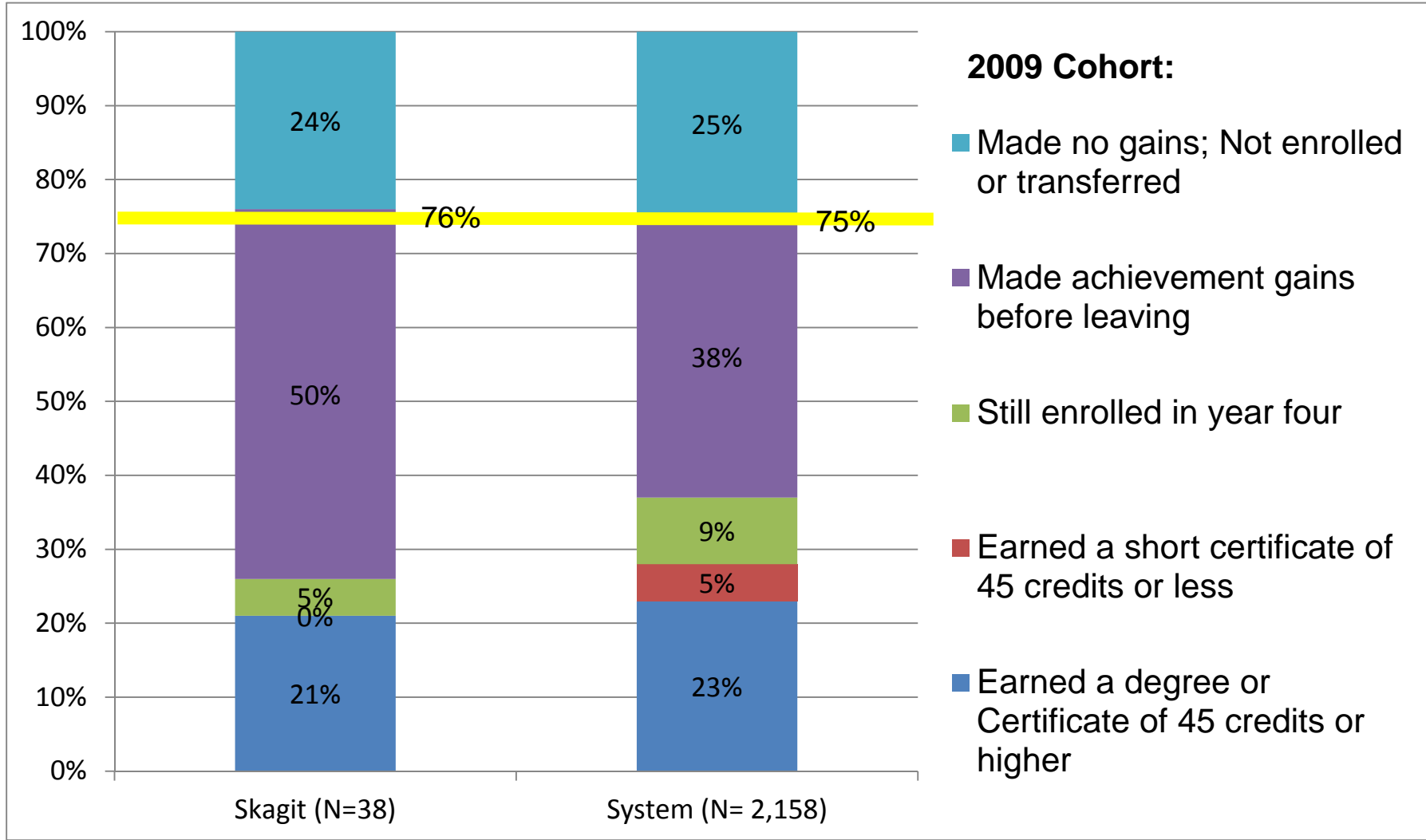
SVC API Student Success Rates Higher than CTC System



SVC was 4 percentage points higher than the CTC system in Asian/Pacific Islander workforce student success.



SVC 'Other Races' Student Success Rates Higher than CTC System



SVC was 1 percentage point higher than the CTC system in "other races" workforce student success.



Core Theme - Achievement

Objective 2:

Students will successfully transition to the workforce.

Indicators:

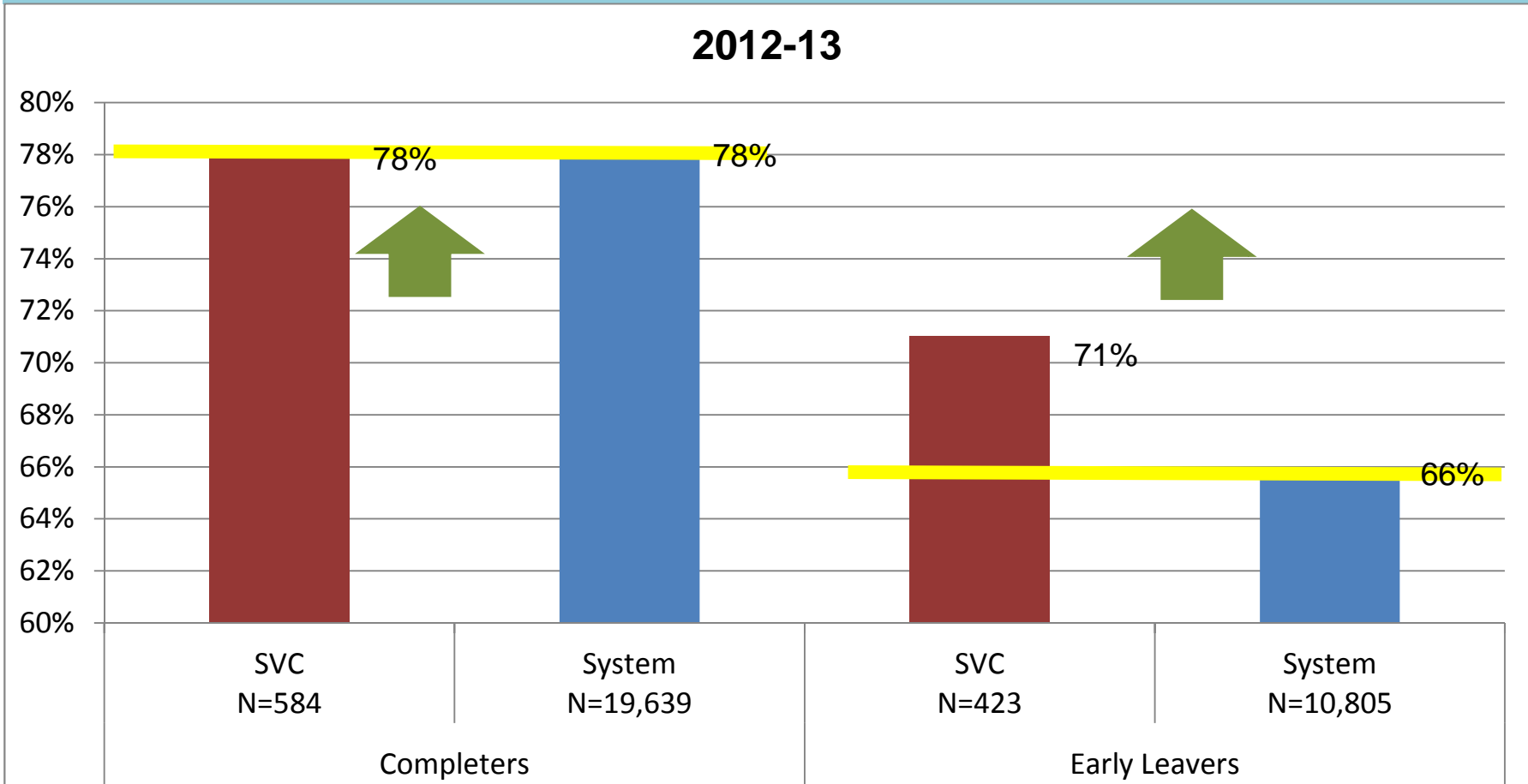
Transition rate of completers

Transition rate of early leavers

Threshold:

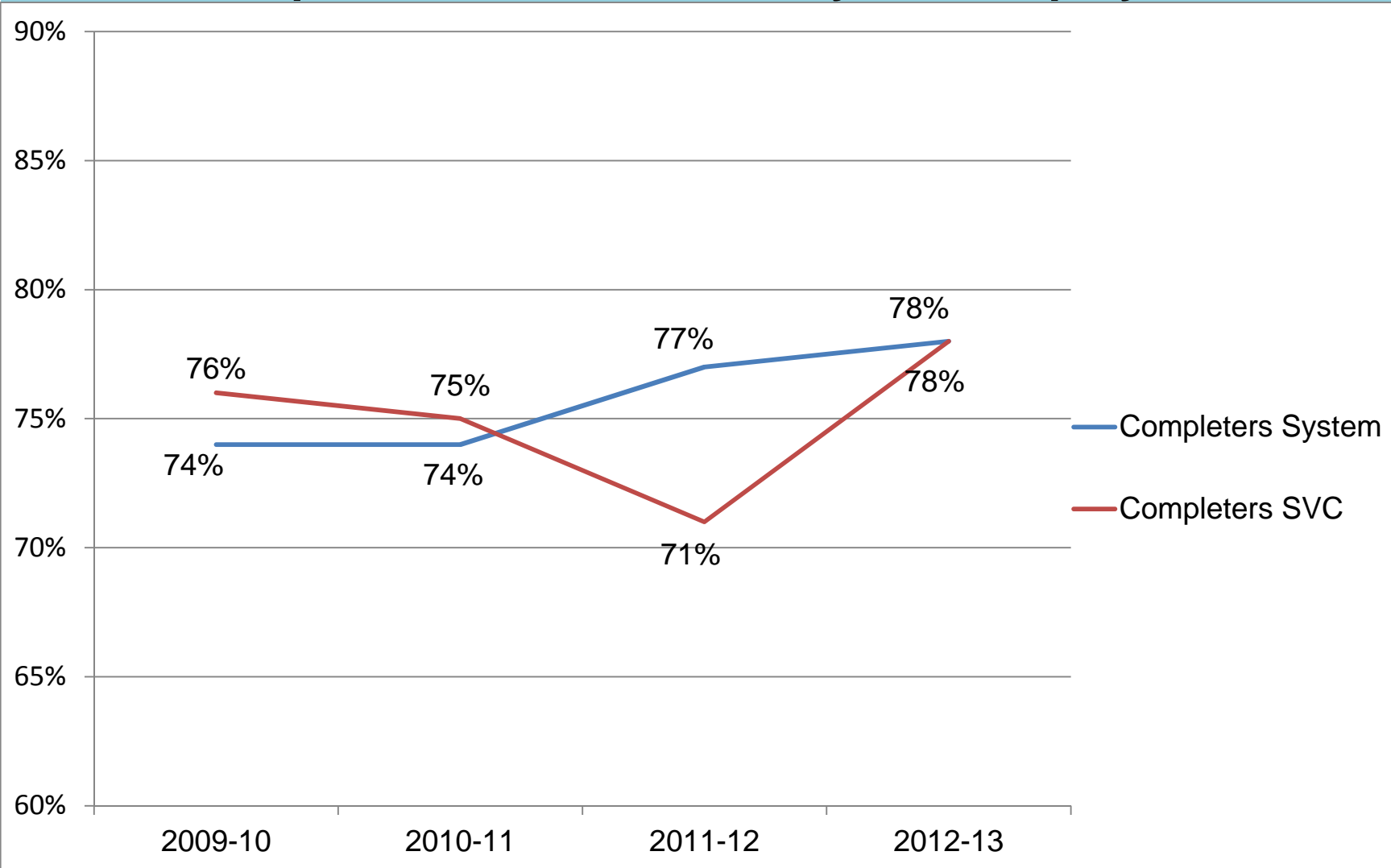
Employment rates will meet or exceed the CTC system rates

Workforce Completer Employment Rates Even with CTC system Workforce Early Leaver Employment Rates Higher than CTC system



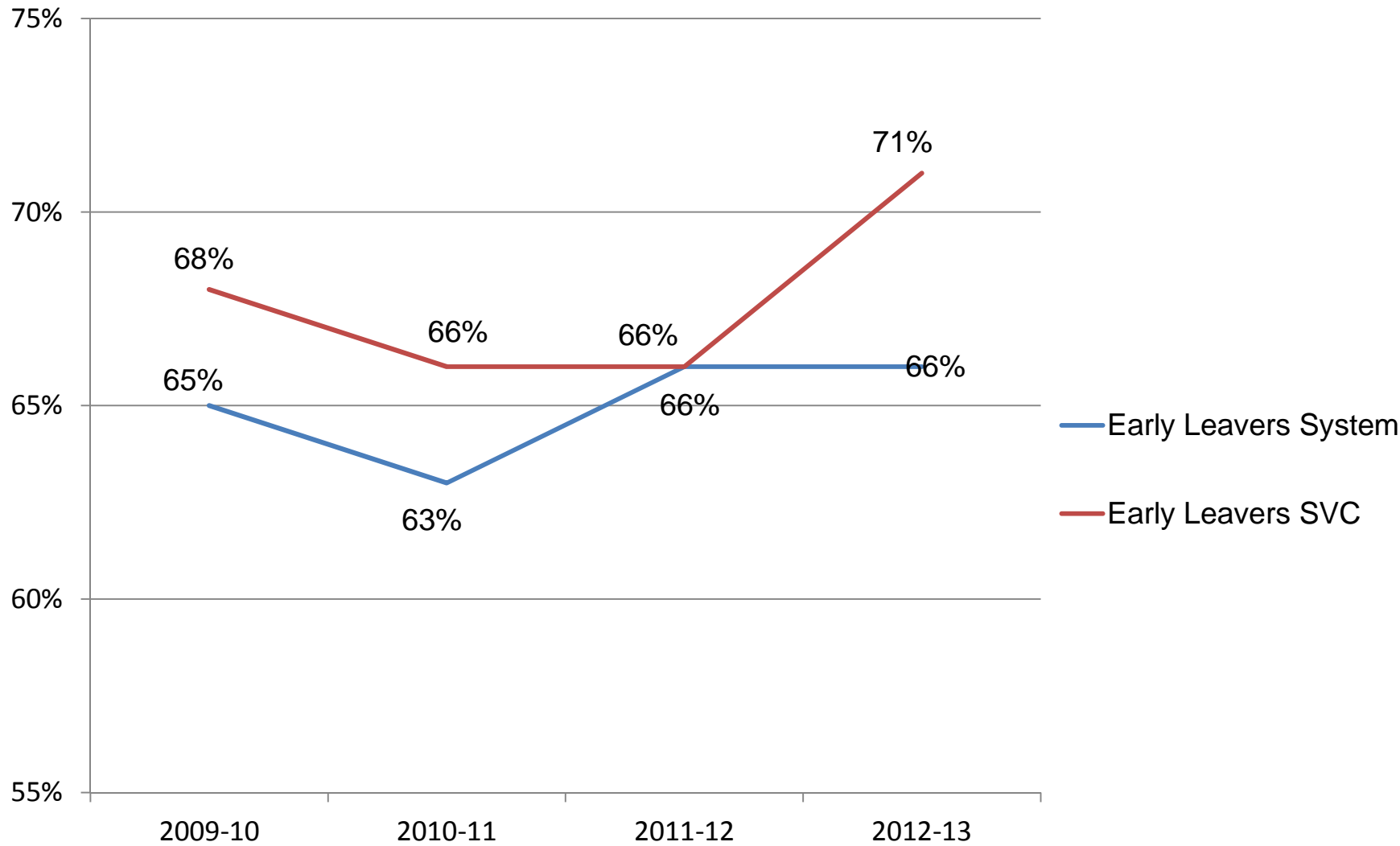
SVC matched CTC system in the employment rate of completers. SVC was 5 percentage points higher than the CTC system in the employment rate of early leavers. (*Students completed training 2011-12, employed in 2012-13, within 9 months after training.)

SVC completers match the CTC system employment rate



SVC has recovered from a dip in 2011-12 and is now meeting the CTC system employment rate for workforce completers.

SVC early leavers continue to exceed CTC system employment rate



SVC continues to meet or exceed the CTC employment rate of early leaver workforce students.

In Summary

Over the past three years, SVC increased the success of its workforce students.

Over the past three years, SVC saw a 3 percentage point increase in the number of workforce students reaching the tipping point or earning a degree.

SVC workforce students are getting jobs at a rate that's on par or higher than the CTC system.